

# CPS8.5 500 W/CH 8-CH Amplifier



**Electro-Voice**

- 8 x 500 W
- High Efficient Class-D Design
- Optimized for permanent installation
- Optional Remote Control Module (RCM-810)
- 2 U Rack Space



The Electro-Voice CPS8.5 amplifier offers eight independent Class-D Variable Load Drive (VLD) amplifier blocks, each one capable of delivering up to 500 Watts into Low-Z or High-Z loads. Per default, each channel can be configured individually for max. power output into either 2  $\Omega$ , 4  $\Omega$ , 70V- or 100V-networks without involvement of any output transformers. Being designed for professional audio installation market, special care was taken for long term cost of ownership parameters: In addition to

remarkably low current consumption and heat dissipation, the CPS8.5 provides remote standby switching with just 5 Watts consumption in standby mode. An optional remote control module RCM-810 provides control and supervision features via IRIS-Net, including monitoring of amplifier status and real time load supervision. In addition, via RCM-810 the Variable Load Drive characteristics can be set for max. power output into any load between 2  $\Omega$  and 10  $\Omega$ , in steps of 0.1  $\Omega$ .

## Technical specifications

	Low impedance mode			High impedance mode	
	2 $\Omega$	4 $\Omega$	8 $\Omega$	70 V/10 $\Omega$	100 V/20 $\Omega$
Maximum midband output power, THD = 1%, 1 kHz, 8 channels driven:	500 W	500 W	250 W VLD: 500 W	500 W	500 W
Rated output power, THD < 0.3%, 20-20 000 Hz, 8 channels driven:	450 W	450 W	225 W VLD: 450 W	450 W	450 W
Maximum bridged output power, THD = 1%, 1 kHz:	-	1000 W	1000 W	1000 W/20 $\Omega$	1000 W/40 $\Omega$
Maximum RMS voltage swing, THD = 1%, 1 kHz:	32 V	45 V	45 V VLD: 63 V	70 V	100 V
Power Bandwidth, THD = 1%, ref. 1 kHz, half power at rated load:	10-25000 Hz			50-25000 Hz	
Voltage gain, ref. 1 kHz:	32 dB	32 dB	32 dB	33 dB	36 dB
Input Sensitivity, rated power, 1 kHz:	0.775 V (0.0 dBu)	1.1 V (+3.0 dBu)	1.1 V (+3.0 dBu)	1.55 V (+6.0 dBu)	1.55 V (+6.0 dBu)
THD at rated output power, MBW = 80 kHz, 1 kHz:	< 0.05%				
IMD-SMPTE, 60 Hz, 7 kHz:	< 0.05%				
DIM30, 3.15 kHz, 15 kHz:	< 0.02%				
Maximum input level:	+22 dBu (9.76 V <sub>rms</sub> )				
Crosstalk, ref. 1 kHz, at rated output power:	< -80 dB				
Frequency response, ref. 1 kHz, 8 $\Omega$ load:	15-30000 Hz ( $\pm 1$ dB)				
Input impedance, active balanced:	20 k $\Omega$				
Damping factor, 1 kHz, 8 $\Omega$ :	> 240				
Slew rate:	28 V/ $\mu$ s				
Signal-to-noise ratio (A-weighted)::	98 dB	100 dB	100 dB	104 dB	106 dB
Output noise, A-weighted:	< -66 dBu	< -65 dBu	< -65 dBu	< -65 dBu	< -64 dBu
Output stage topology:	Class D				
Power requirements:	220-240 V, 50-60 Hz or 120 V, 50-60 Hz or 100 V, 50-60 Hz				
Inrush current:	27 A				
Inrush current, after five-second power cycle:	14 A				
Power consumption, 1/8 maximum output power:	930 W				
Protection:	Audio Limiters, High Temperature, DC, HF, Short Circuit, Peak Current Limiters, Inrush Current Limiters, Turn-on Delay, Mains Circuit Breaker Protection, Mains Over/Undervoltage Protection				
Cooling:	Front-to-Rear, temperature controlled fans				
Operating temperature:	+5° to +40° C				
Safety class:	I				
Color:	Black				

### 3 | CPS8.5 500 W/CH 8-CH Amplifier

---

Product dimensions (Height x Width x Depth):	88.1 mm x 483 mm x 420.8 mm
--	-----------------------------

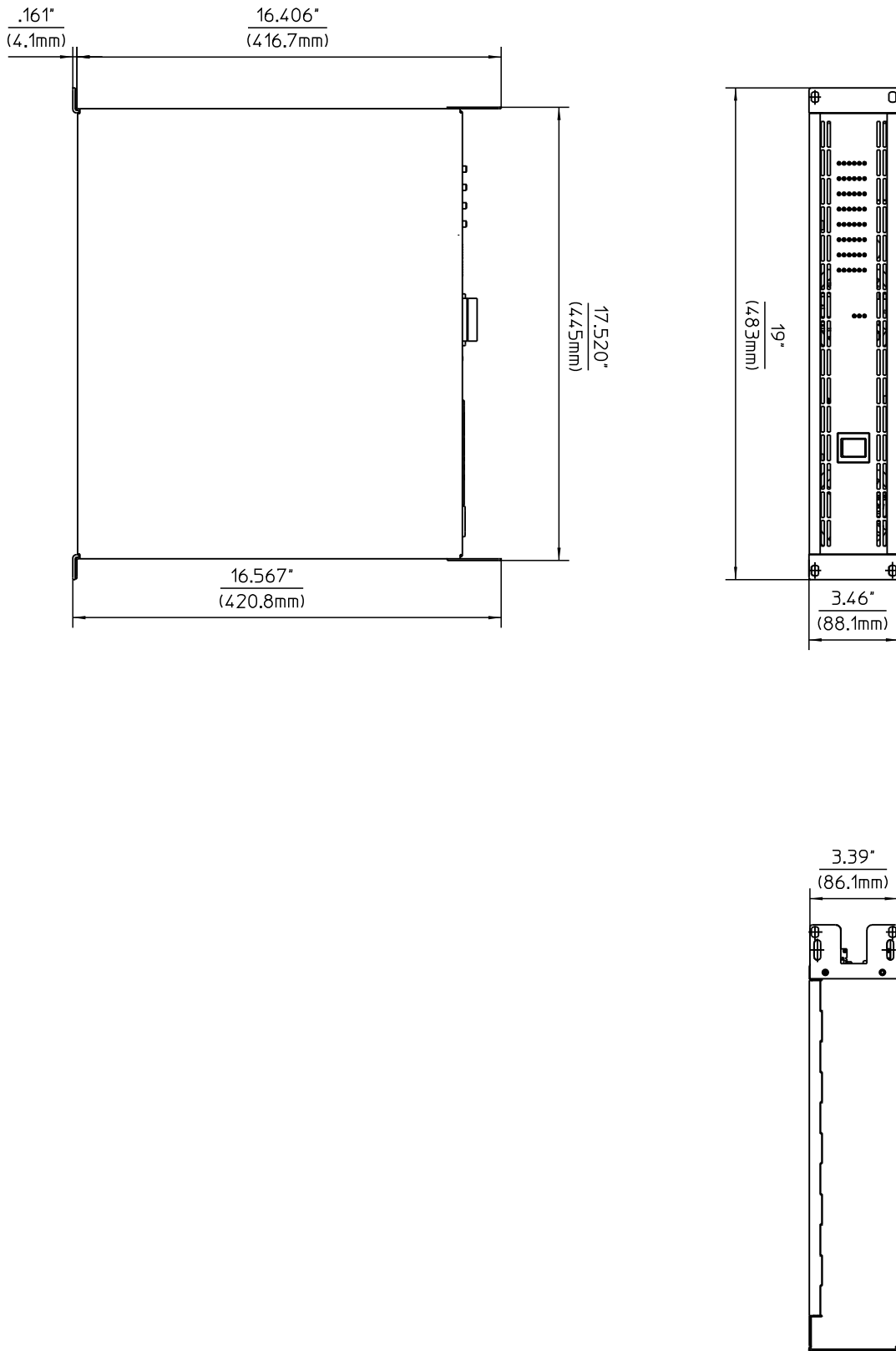
---

Net weight:	13.9 kg
-------------	---------

---

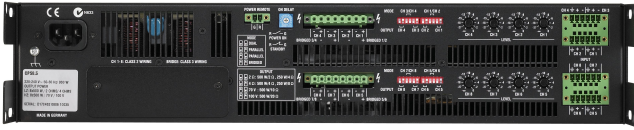
**\* Depending on the ambient temperature, the unit might not operate continuously at 2  $\Omega$  load in Dual Mode or 4  $\Omega$  load in Bridged Mode. In addition input power exceeds 1.1 times rated power consumption with at 2  $\Omega$  load in Dual Mode or 4  $\Omega$  load in Bridged Mode.**





Dimensions

## System overview



Rear view

## Ordering information

### **CPS8.5-100V CPS8.5 100V ENDSTUFE**

8-channel Class-D amplifier, 2RU , per channel configurable 2/4Ohm/70V/100V, slot f. optional RCM810 remote module; 8 x 500 W  
Order number **CPS8.5-100V**

---

### **CPS8.5 CPS8.5 120V ENDSTUFE**

8-channel Class-D amplifier, 2RU , per channel configurable 2/4Ohm/70V/100V, slot f. optional RCM810 remote module; 8 x 500 W  
Order number **CPS8.5**

---

### **CPS8.5-230V CPS8.5 220-240V ENDSTUFE**

CPS8.5 230 V, 8-channel Class-D amplifier, 2RU, per channel configurable 2/4Ohm/70V/100V, slot f. optional RCM810 remote module; 8 x 500 W, black  
Order number **CPS8.5-230V**

---

### **Accessories**

#### **LML-1 HiZ-Loudspeaker Line Measuring Load (4)**

Line measuring load  
Order number **LML-1**

---

#### **RCM-810 Remote monitoring module**

RCM-810 Remote Control Module for IRIS-Net  
Order number **RCM-810**

---

#### **DC-RMK15 RMK-15**

Rack Mount Kit for amplifiers, Length 15,5"; 1L/1R  
Order number **DC-RMK15**

---

### Represented by:

#### **Germany:**

Bosch Sicherheitssysteme GmbH  
Robert-Bosch-Ring 5  
85630 Grasbrunn  
Germany

Bosch Security Systems, Inc.  
12000 Portland Avenue South  
Burnsville MN 55337  
USA

[www.electrovoice.com](http://www.electrovoice.com)