

KICKER® 46HDS962

Motorcycle Audio Kit Installation Guide for Harley Davidson® Electra Glide | Street Glide | Ultra Glide | Bat Wing Trikes 1996–2013 (FLHT)

Package Contents:

(1) Install Guide	(1) Wiring Harness	(4) Black Cable Ties
(2) 5-1/4" KICKER Speakers	(6) 8-32 x 1/2" Button Head Bolts	(1) Amp Mounting Bracket
(1) 200W KICKER Amp	(6) 8-32 Nylock Nuts	(4) Black Heat Shrink

*Important: Over-tightening mounting fasteners may result in damage to your motorcycle. Please refer to your service manual for proper procedures and torque specifications. KICKER is not responsible for damage resulting from improper installation techniques. This kit **may not** be compatible with some aftermarket head units.*

GETTING STARTED

1. Protect all painted surfaces and passing lamps, if equipped, with a soft cloth.
2. Remove seat and disconnect negative battery terminal. **(Fig. 1)**
 - a. On 2009 and later models it will help to remove the two T40 bolts and the ECM and tray. **(Fig. 2)**
3. Remove windshield and outer fairing.
 - a. Remove the three windshield fasteners. **(Fig. 3)**
 - b. Remove the four T27 fairing fasteners and disconnect the headlamp. (There are two as shown in **Fig. 4** and two located between the fork and the frame)

SPEAKER REMOVAL/ INSTALLATION

4. Unplug both terminals on the left and right speakers. **(Fig. 5)**
5. Remove the three T25 fasteners that secure each speaker to the inner fairing.
6. If using the KICKER grilles, peel the stock speaker grilles off of the speaker stand-off **(Fig. 6)**
7. Separate the speaker from the stand-off, it's a snap fit **(Fig. 7)**
8. Insert your KICKER speaker into the stand-off, making sure the terminals are on the top side
9. Now is the time to install your KICKER emblems into the KICKER grilles, if using
 - a. Place emblem into grille and bend tabs over
10. Lay the grille over the speaker and refasten the speaker to the inner fairing using the hardware removed in step 5.

AMP INSTALLATION

11. Disconnect the radio harness and antenna from the radio. **(Fig. 8)**
12. Remove the two T20 fasteners at the top of the radio chassis. **(Fig. 8)**
 - a. If using on a radio with CB and/or XM modules, remove the modules from the radio at this time.
13. Fasten the amplifier to the bracket using supplied hardware and orient with connector to the clutch side of the motorcycle. **(Fig. 9)**
14. Making sure all wiring is safely out of the way, slide the amp bracket over the radio chassis and engage tabs on amp bracket into the rubber grommets on the radio. **(Fig. 10)**
15. Reinstall the T20 fasteners, removed in step 2, through the amp bracket and into the radio. **(Fig. 10)**
16. To reinstall modules, slide them under the radio chassis and fasten to the tabs on the amplifier bracket with supplied hardware.

WIRE ROUTING

17. Take the electrical harness and plug it into the amplifier.
18. Following the color code, route the left and right side speaker wires safely to their respective speakers. **(Fig. 11)**
19. Plug in the male ends into the stock harness, the terminals removed during speaker installation. **(Fig. 11)**
20. Plug the female ends onto the speaker terminals. **(Fig. 11)**
21. Locate the headlamp harness and remove the red cap over the Orange/White wire. If the Orange/White wire is currently in use (e.g. accessory lighting) unplug and connect to one of the blue wires from the KICKER harness. Plug the other blue wire from the KICKER harness into the Orange/White wire, making sure it is fully engaged. **(Fig. 12)**
22. Whether the extra blue wire lead is being used or not, heat shrink has been provided to put over it to reduce the risk of a short. **(Fig. 15)**
23. Follow the proper procedure to remove the fuel tank.
24. Remove the electrical caddy lid.
25. Route the power harness on the clutch side of the frame neck, lay it into that caddy and under the seat. **(Fig. 14 & 15)**
 - a. You may want to remove the fuse now while figuring out wire placement.
26. The blue lead under the seat would be used if installing a second amplifier, but again, whether used or not, cover with heat shrink to reduce the risk of a short. **(Fig. 15)**

SYSTEM SETUP

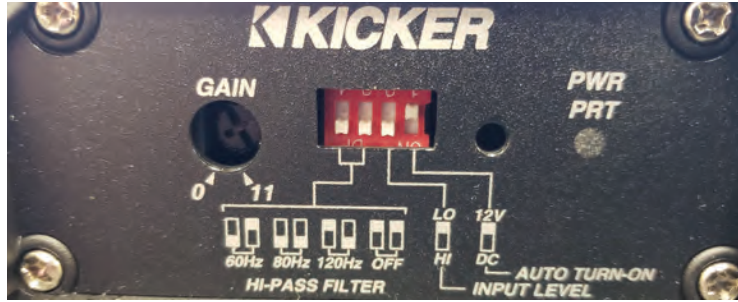
Note: KICKER recommends that the dip switches be set up as follows:

Input Gain control – 0

HI-PASS – 80 Hz

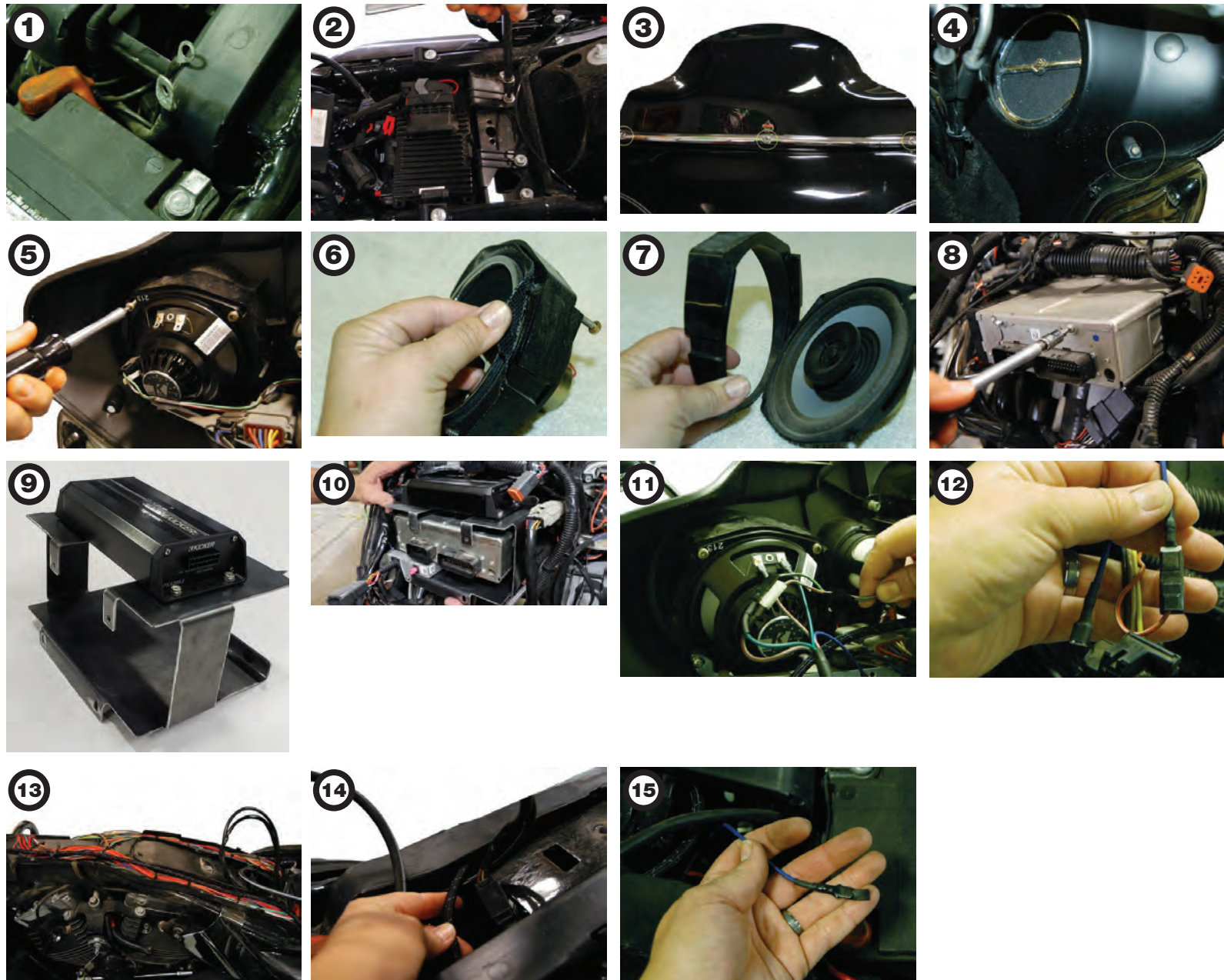
Input level - HI

Auto turn-on - 12V



- 27. Connect the battery terminals, install fuse, check audio system operation and set gain to optimize system performance.
- 28. Be sure to check that none of the wires will be in a bind when the steering head is turned fully to the right or the left.
- 29. Disconnect negative battery terminal and carefully reassemble motorcycle.
- 30. Reconnect negative battery terminal, install seat and enjoy your KICKER audio system!

For questions, please contact KICKER Technical Support at 800-256-0808, M-F 8:00 am – 5:00 pm CST or email at support@kicker.com. For installation videos please go to our KICKER YouTube channel.



KICKER cannot be held responsible for any damage to painted surfaces during removal or addition of KICKER parts.