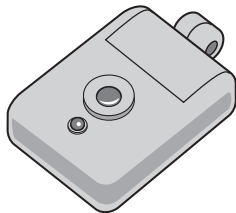


LMT-1

PORTABLE TRANSMITTER

Instruction Manual



Linear
Building On Innovation.

USA & Canada (800) 421-1587 & (800) 392-0123
(760) 438-7000 - Toll Free FAX (800) 468-1340
www.linearcorp.com

OPERATING THE UNIT

To send a signal to the receiver, a single button on the face of the transmitter must be pressed for a minimum of two seconds. When the unit is sending a signal, the red LED will light.

TRANSMITTING RANGE

The maximum transmitting range is determined by the receiver used, and various conditions in the installation.

BATTERY LIFE & LOW BATTERY INDICATION

Under normal conditions, the 12 volt Duracell MN21 battery should last 12 to 18 months. When the battery gets low, the red LED will flicker dimly when the unit is activated.

CHANGING BATTERIES

STEP 1: Twist the lanyard loops and remove the battery door. (see figure 1)

STEP 2: Carefully remove the old battery and discard according to manufacturers recommendations.

Step 3: Install a fresh battery as shown in Figure 2. Replace the transmitter battery door.

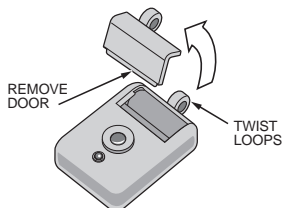


Figure 1. Removing Battery Door

PRODUCT DESCRIPTION

The Model LMT-1 is a compact light-weight, wireless transmitter. When activated by pressing the button for two seconds, it will trigger the remote receiver programmed to recognize the transmitter.

Measuring only 1.5 by .75 inches, the LMT-1 can be worn on the supplied lanyard or attached to a keyring. The transmitter is supplied with an adjustable lanyard with a breakaway release.

The LMT-1 incorporates Linear's proprietary "MegaCode" circuit that provides each transmitter with over one million security codes.

A Duracell MN21 battery powers the transmitter. The red LED on the front of the transmitter will light when the unit is activated.

TRANSMITTER CODING

Each LMT-1 transmitter has been pre-programmed at the factory to one in a million codes. The transmitter will retain its pre-programmed code even with low or no batteries. Refer to the receiver's instructions for details on programming the transmitter into the receiver. Most receivers have a "learning" or "program" mode. Triggering the transmitter with the receiver in a "learning" mode will cause the transmitter's code to be entered into the receiver's memory.

TESTING

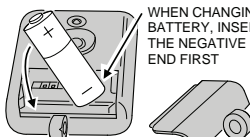
When the transmitter button is pressed, the red LED should light indicating that the unit is transmitting and the battery is good. If the LED does not light, the battery is low, dead or installed incorrectly.

Operate the transmitter from various locations to identify any weak signal areas or "dead spots" that may be caused by interference or certain metal obstacles.

IMPORTANT: The transmitter button must be pressed for a minimum of two seconds to activate the receiver.

IMPORTANT!

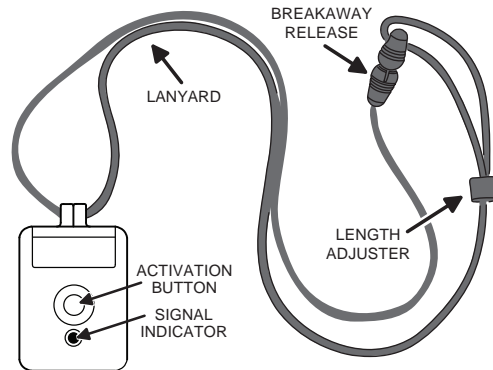
WHEN CHANGING THE BATTERY, INSERT THE NEGATIVE (-) END FIRST



PUSH POSITIVE (+) END INTO TRANSMITTER LAST

Figure 2. Proper Installation of Battery

FEATURES



LINEAR LIMITED WARRANTY

This Linear product is warranted against defects in material and workmanship for twelve (12) months. **This warranty extends only to wholesale customers** who buy direct from Linear or through Linear's normal distribution channels. Linear does not warrant this product to consumers. Consumers should inquire from their selling dealer as to the nature of the dealer's warranty, if any. **There are no obligations or liabilities on the part of Linear LLC for consequential damages arising out of or in connection with use or performance of this product or other indirect damages with respect to loss of property, revenue, or profit, or cost of removal, installation, or reinstatement.** All implied warranties, including implied warranties for merchantability and implied warranties for fitness, are valid only until the warranty expires. **This Linear LLC Warranty is in lieu of all other warranties express or implied.**

All products returned for warranty service require a Return Product Authorization Number (RPA#). Contact Linear Technical Services at 1-800-421-1587 for an RPA# and other important details.

IMPORTANT !!!

Linear radio controls provide a reliable communications link and fill an important need in portable wireless signaling. However, there are some limitations which must be observed.

- * For U.S. installations only: The radios are required to comply with FCC Rules and Regulations as Part 15 devices. As such, they have limited transmitter power and therefore limited range.
- * A receiver cannot respond to more than one transmitted signal at a time and may be blocked by radio signals that occur on or near their operating frequencies, regardless of code settings.
- * Changes or modifications to the device may void FCC compliance.
- * Infrequently used radio links should be tested regularly to protect against undetected interference or fault.
- * A general knowledge of radio and its vagaries should be gained prior to acting as a wholesale distributor or dealer, and these facts should be communicated to the ultimate users.

This device complies with FCC Part 15 and Canada Rules and Regulations. Operation is subject to the following two conditions: (1) This device may not cause harmful interference and (2) this device must accept any interference received, including interference that may cause undesired operation.