

AUDIO

Contractor Elite Series Indoor/Outdoor Wall-Mount Speakers

SPCE80TW

8", white housing, 70V, each

SPCE80TB

8", black housing, 70V, each

SPCE60W

6.5", white housing, 8 Ohms, pair

SPCE60B

6.5", black housing, 8 Ohms, pair

SPCE60TW

6.5", white housing, 70V, pair

SPCE60TB

6.5", black housing, 70V, pair

SPCE50W

5.25", white housing, 8 Ohms, pair

SPCE50B

5.25", black housing, 8 Ohms, pair

SPCE50TW

5.25", white housing, 70V, pair

SPCE50TB

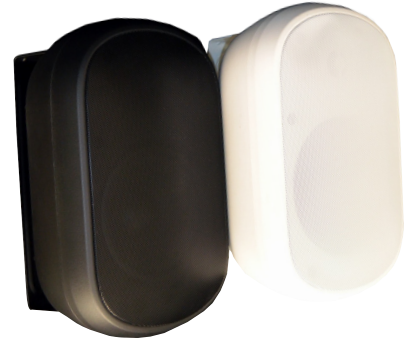
5.25", black housing, 70V, pair



Features

Contractor Elite is far from your common speaker line. Though designed with commercial applications in mind, these speakers are built with high-performance materials and features you'd find in high-end residential installations. The Contractor Elite Outdoor speaker line provides amazing sound, stylish looks, and easy installations – all for an amazing price.

- Great sound at an affordable price
- IP66 compliant, weather resistant
- Aluminum grille for extended use in outdoor environments
- "T" models come with a selectable 70V transformer
- 5 year warranty against manufacturing defects
- NDAA Compliant*



Speaker Specifications	(8" Models)	(6.5" Models)	(5.25" Models)
RMS Output Power	100W	60W	40W
Max Output Power	140W	120W	80W
Sensitivity (1W/1M)	87dB	88dB	84dB
Maximum SPL (Pmax/1M)	108dB	102dB	100dB
Impedance	8 Ohms	8 Ohms	8 Ohms
Frequency Response Range	65Hz - 20kHz	85Hz - 20kHz	90Hz - 20kHz
Driver	8" polypropylene woofer, 1" silk dome tweeter	6.5" polypropylene woofer, 1" silk dome tweeter	5.25" polypropylene woofer, .75" silk dome tweeter
Transformer Settings (for "T" Models only)	70V (100W, 50W, 25W, 12.5W, 8 Ohms)	70V (50W, 25W, 12.5W, 6W, 3W, 8 Ohms)	70V (40W, 20W, 10W, 5W, 2.5W, 8 Ohms)

Operating Specifications			
Dimensions	9.8" (L) x 7" (D) x 15.6" (H)	7.9" (L) x 6.6" (D) x 12.6" (H)	7" (L) x 5.5" (D) x 11.3" (H)
Speaker Grille Material	Aluminum	Aluminum	Aluminum

NDAA COMPLIANT

*Products are in compliance with NDAA Section 889 Part B Guidelines



close-up image of transformer and wire terminals