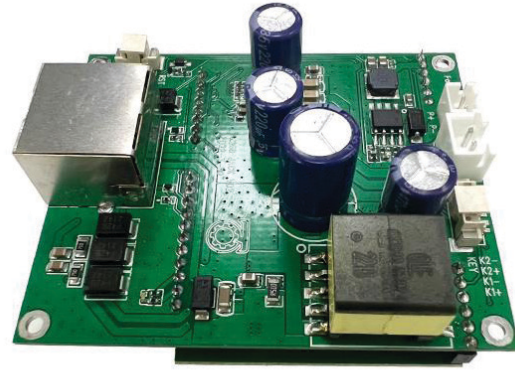


## SPIP100M

IP Audio Encoder

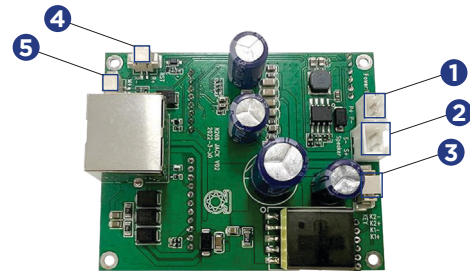
### Features

- Turn your speakers into network IP Speakers
- Works with most 8 ohm Speakers
- Supports Two-way communication
- Supports 48k OPUS audio codec
- Compatible with SIP and ONVIF
- Alarm: GPIO, HTTP URL
- Pre-Recorded messages (WAV/MP3)
- MIC and speaker interface
- Reset and volume control



### Specifications

Protocol	SIP, ONVIF, HTTP, IPv4, DHCP, RTSP, RTP, RTCP, TCP, UDP, ARP, FTP, TFTP, NFS, NTP
Audio Codec	OPUS 48 kHz, MP3 44.1 kHz, G.722 ADPCM 16 kHz, G.711 PCMU 8 kHz, G.711 PCMA 8 kHz
Network Interface	RJ45, 10BASE-T/100BASE-TX
Interface	1*MIC input, 1* Speaker output, 2* IO Alarm input, 1* Reset
Power	PoE or DC 12V/24V
Rated Power	15W
Operating Temperature	-22°F ~+140°F
Operating Humidity	5%-85%
Function	Compatible with VoIP devices and ONVIF VMS, support two-way communication, pre-recorded messages, schedule play, GPIO in, HTTP control
Dimensions	2.55" x 2.04" x 1.06"



1	<b>Power Input Interface</b>	12V input
2	<b>Speaker Interface</b>	Maximum support 15W speaker
3	<b>External Interface</b>	Connect to: 1. External keys 2. Infrared probe and emergency switch 3. Door sensor and other switch components
4	<b>System Reset Key</b>	Press key and hold for 3 seconds,
5	<b>Microphone Interface</b>	

