



**12"**  
Infotainment  
System



PN: SRX-JK11128



# HORIZON 12™

## SRX-JK11128 USER GUIDE

## FIND YOUR HORIZON

You're ready to take on any adventure with your Stinger HORIZON12 radio kit!

Additionally, your new SRX-JK11128 kit enables you to replace a Jeep Wrangler JK factory radio with a show-stopping 12-inch multimedia infotainment system while retaining OEM features and maintaining a flush, factory look and feel!

### About this document

This document covers features added to the HORIZON12 by your SRX-JK11128 kit. If you need to reference the HORIZON12 user guide, you can find it by scanning the QR code.

<https://stingersolutions.com/pages/horizon12-product-info>



HORIZON12 USER GUIDE

**MUST PERFORM AFTER INITIAL STARTUP**  
Turn vehicle on, Master Reset Radio in installer settings. Once complete, press reset button on display. Once reboot is complete, turn off vehicle and wait 1 minute. Turn the vehicle back on. Vehicle specific widgets will then appear.

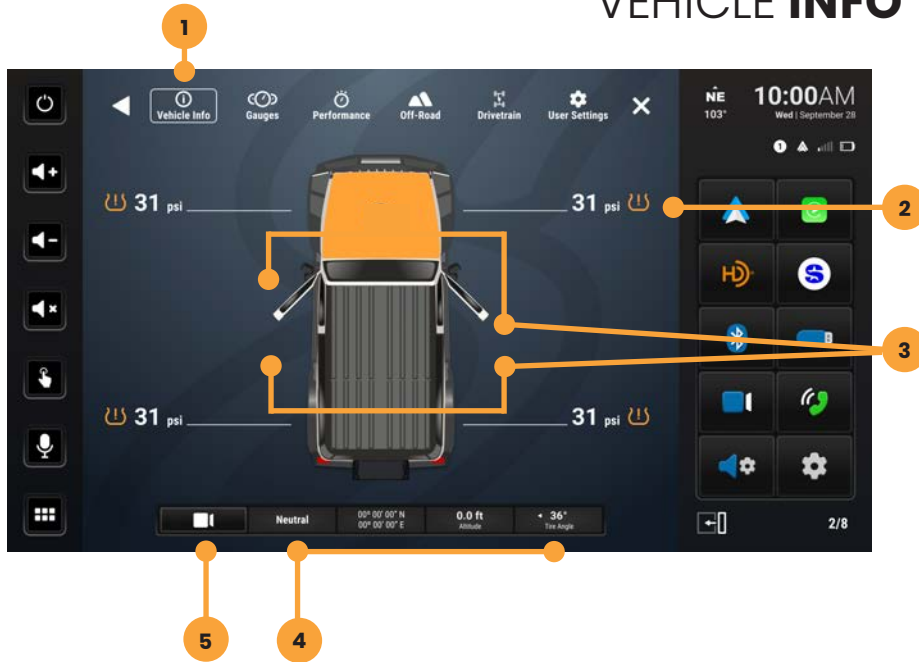
## CONTENTS

# WELCOME TO YOUR NEW HORIZON12™ SRX-JK11128 USER GUIDE CONTENTS

Basic Operation	4
Vehicle Info	6
Gauges	7
Performance	8
Off-Road	9
Drivetrain	10
User Settings	11
Cameras & Overlay	12
Factory USB Ports	13
PAC Steering Wheel Controls	14
Updating System Firmware	15



## VEHICLE INFO



Press the **HOME BUTTON > Vehicle Info** to access the Vehicle Info functions.

### 1. Vehicle Info Menu

Access various vehicle info display modes.

### 2. Tire Pressure

Low pressure warnings can be customized in User Settings.

### 3. Door Closed / Opened

Indicates door, and rear gate statuses.

### 4. Vehicle Info Footer

Available on all vehicle information displays. Shows Transfer Case status, GPS Coordinates, Altitude, and current Tire Angle

### 5. Default Off-Road Camera

Activate default camera, can be changed in User Settings

## VEHICLE INFO > GAUGES



Press the **HOME BUTTON > Vehicle Info > Gauges** to access Gauges.

### 1. Gauges

Tap a gauge to cycle through available gauge types.

### 2. Gauge Setup Preset

There are two preset gauges setups. Press and hold to save a gauge combination and then tap that setup again to recall that combination.

Change colors in **HOME > Setting > Display > System Highlights**

Change gauge units in User Settings.

### Available Gauges:

- Battery Voltage
- Oil Temperature (if Supported)
- Oil Pressure (if Supported)
- Transmission Temperature (Automatic Only)
- Coolant Temperature
- Fuel Gauge
- Intake Air Temperature
- Engine Calculated Load
- Barometric Pressure
- Intake Manifold
- Fuel Pressure
- Absolute Load
- Ignition Timing
- Engine Run Time

## VEHICLE INFO > PERFORMANCE



Press the **HOME BUTTON > Vehicle Info > Performance** to access Performance.

Selecting Performance will display a digital speedometer and tachometer along with performance measurements.

### 1. Best 0-60 / 1/4 Mile / 60-0

Whenever a new best performance measurement is achieved, the results will be displayed. Use left / right arrows to recall best measurements. Reset best measurements with the reset button.

### 2. Last 0-60 / 1/4 Mile / 60-0

Use left / right arrows to recall last measurements for each performance metric.

## VEHICLE INFO > OFF-ROAD



Press the **HOME BUTTON > Vehicle Info > Off-Road** to access Off-Road.

### 1. Pitch

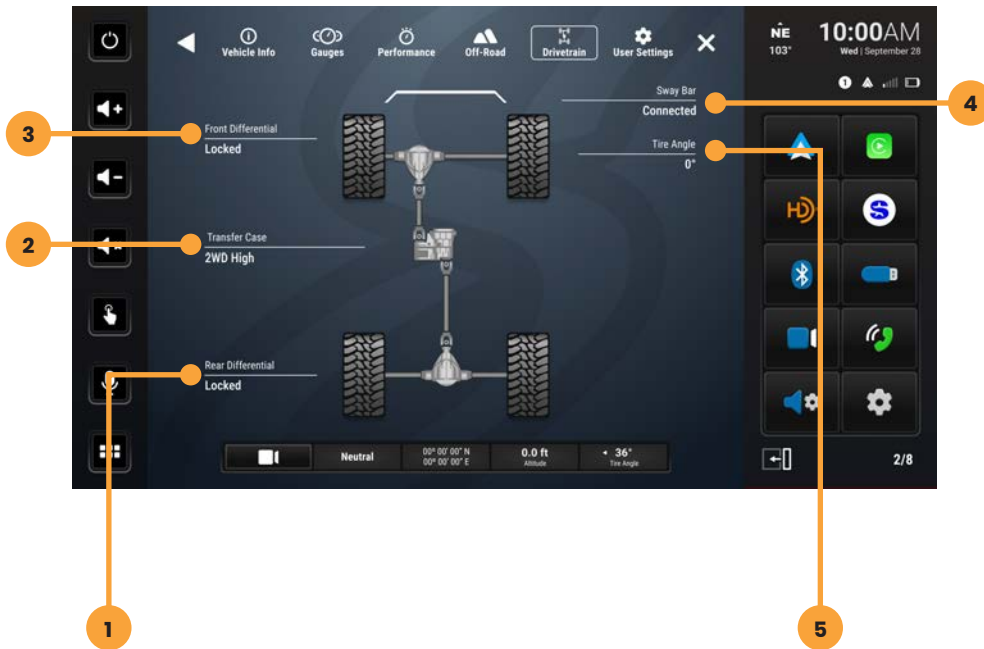
### 2. Compass

### 3. GPS / Altitude

### 4. Roll



## VEHICLE INFO > **DRIVETRAIN**



Press the **HOME BUTTON > Vehicle Info > Drivetrain** to access Drivetrain (if equipped.)

- 1. Rear Axle** (Only Displays if Vehicle has Factory Lockers)
- 2. Transfer Case**
- 3. Front Axle** (Only Displays if Vehicle has Factory Lockers)
- 4. Sway Bar** (Only Displays if Vehicle is a Rubicon)
- 5. Tire Angle**

## VEHICLE INFO > **USER SETTINGS**



Press the **HOME BUTTON > Vehicle Info > User Settings** to access Settings.

### 1. Default Off-Road Camera

Select which camera activates when you press the camera button

### 2. Scan Tool Warning

It's possible that you might have an accessory installed that makes gauge operation unreliable. If so, this control will enable or disable the scan tool warning on the gauge cluster.

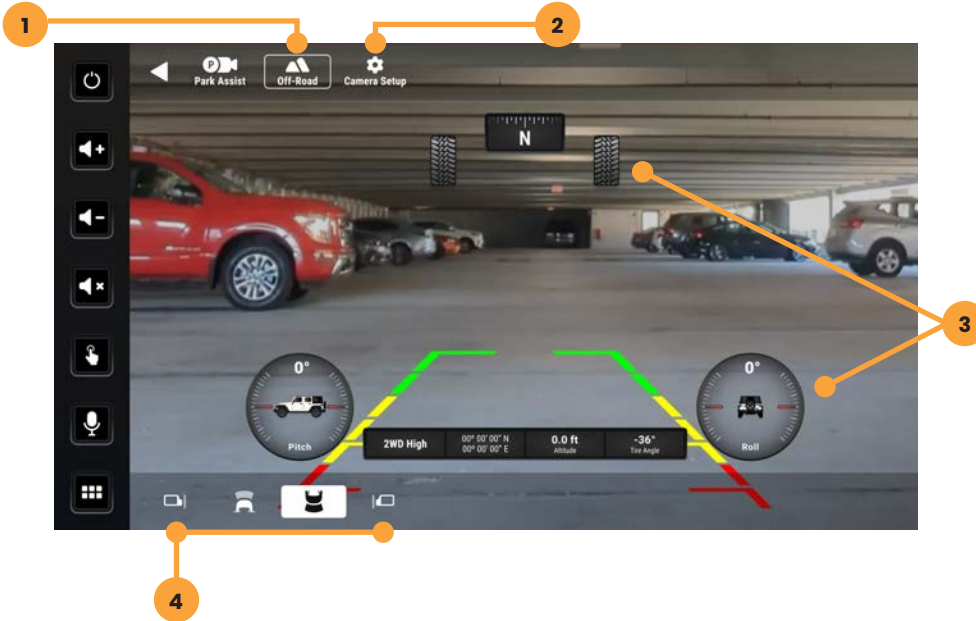
### 3. Low Tire Pressure

Set the threshold, for the low tire pressure warning shown on the vehicle info display.

### 4. GPS Precision

Sets the accuracy of the displayed GPS coordinates

## CAMERA OVERLAY



Press the **HOME BUTTON > Camera** to access Camera views.

The factory rear camera will continue to automatically display when in reverse and can also be activated at any time by selecting Cameras from the HOME Menu or Tabs.

When the camera is first activated, there will be menu bars at the top and bottom of the display. These bars contents will vary depending on your installed equipment. These bars will auto-hide after 5 seconds

### 1. Off-Road Mode

Activating Off-Road Mode will display heading, tire angle, pitch, roll, and the vehicle information toolbar.

### 2. Camera Setup

Access your camera setup from this control. Turn triggers on, off, and adjust advanced camera features

### 3. Off-Road Overlay Elements

### 4. Camera Selection

Tap a camera icon to change cameras. Contents of this area will change based on your installed equipment

## USB PORTS

The SRX-JK11128 will include the SSUSB3 adapter that will take the place of the factory cigarette lighter port. The SSUSB will offer USB-A and USB-C connections that are fully integrated to your Horizon12 radio.

### Primary Functions USB-C:

- Apple Carplay
- Android Auto
- USB Drive Media
- Charging
- Firmware Updates

### Secondary Functions USB-A:

- USB Drive Media
- Charging
- Firmware Updates



## PAC STEERING WHEEL CONTROLS

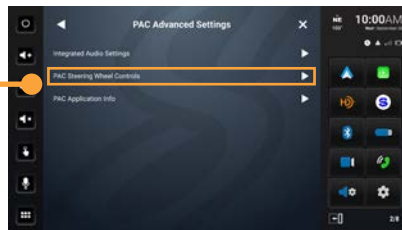
The PAC interface allows retention and customization of the factory steering wheel control buttons.

By default they will be programmed according to the factory functions. You may change the function or add Long Press functionality to any button. For example you can assign Long Press on Volume Down to activate Mute.

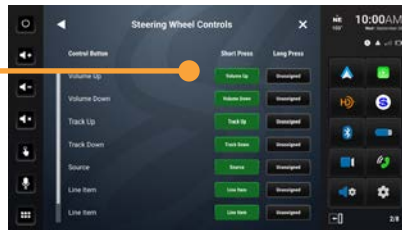
### 1. Access Installer Settings and select PAC Advanced Settings



### 2. Select PAC Steering Wheel Controls



### 3. To change or add a SWC function, touch the corresponding short or long press assignment



### 4. A function menu will be displayed with the current function highlighted.

Select any of the functions to assign that function to that button.



## UPDATING SYSTEM FIRMWARE

### 1. Format a USB Drive

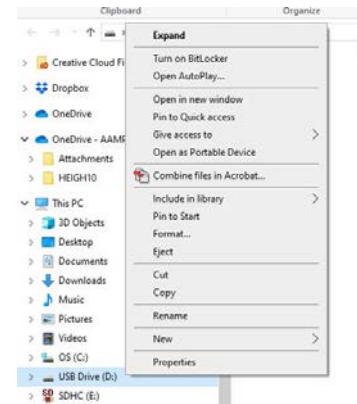
In order to prepare a USB Flash Drive for use with your HORIZON12 system, the USB drive must be formatted to FAT32 / MS-DOS(FAT).

#### Windows PC

1. Insert a 32GB+ USB Drive
2. Open File Explorer

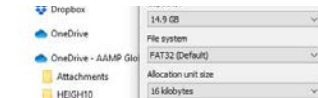


3. Right click on USB Drive and select Format

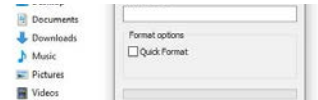


4. Select FAT 32 (Default) File System

5. Deselect Quick Format



6. Click Start



#### MAC OSX

1. Insert a 32GB+ USB Drive
2. Launch the Disk Utility App from the Utilities folder
3. Select the USB drive from the External List and click Erase

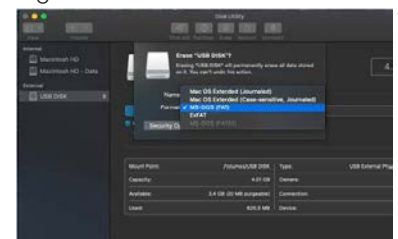


4. Select MS-DOS(FAT) from the format drop-down menu and click Erase



### 2. Download Firmware

Download the firmware file from [StingerSolutions.com](http://StingerSolutions.com). Transfer the







firmware file as-is onto the formatted USB drive.

The file must be in the root directory of the USB drive. Do not unzip the file.

### 3. Install System Update

Insert the USB drive into any USB port on the radio.

*NOTE: When updating the firmware, all settings will be reset to factory defaults.*

Station presets, EQ presets, audio/crossover settings, time alignment, camera settings will all be overwritten.

You can export user settings to the same USB drive you prepared earlier from the Installer menu.

Your HORIZON12 will automatically detect the firmware file, either when you plug it into your powered radio or on startup

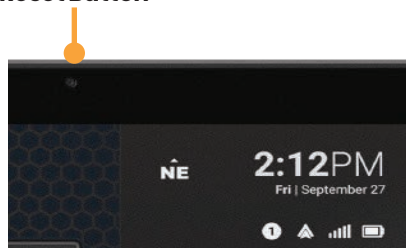
Tap Update Firmware on the popup. The update will take 6 - 8 minutes.

**NOTE: Do not attempt to stop an update. DO NOT turn off power. The system will be damaged if power is lost during the update process.**

### 4. System Reset

When the update is complete and display is on the Radio source, Turn vehicle on, Master Reset Radio in installer settings. Once complete, press **Reset** button on display. Once reboot is complete, turn off vehicle and wait 1 minute. Turn the vehicle back on. Vehicle specific widgets will then appear and update is complete.

Reset Button



# HORIZON12™

The HORIZON12 infotainment radio boasts, a roomy 12.8-inch touchscreen, wireless smartphone connection, and IP65 weather-resistance for any adventure.

**Enhance your experience with our compatible products**

**AudioControl®**  
*Making Good Sound Great™*

**DM Smart DSP App Intergration**  
On-screen control of AudioControl's DM series processors and amplifiers



**Factory Vehicle Integration**  
Retain factory features and add even more upgraded features

**ENLIGHT10**

**RGB Light Control**  
On-screen control of ENLIGHT10 RGB dynamic LED lighting