



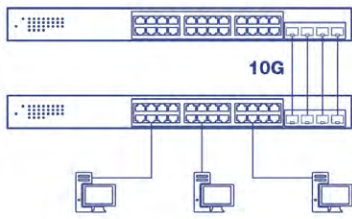
## 28-Port Gigabit Web Smart Switch with 10G SFP+ slots

TEG-30284 (v2.0R)

- 24 x Gigabit ports
- 4 x 10G SFP+ slots
- Easy-to-use web-based management interface
- Supports IPv6, LACP, VLAN, QoS, and IGMP/MLD Snooping
- IPv4/IPv6 Static Routing support
- Bandwidth control per port
- Private, Multicast, and Voice VLAN support
- Fanless design ensures silent operation
- 128Gbps switching capacity
- IEEE 802.1p QoS with queue scheduling support
- Lifetime Warranty

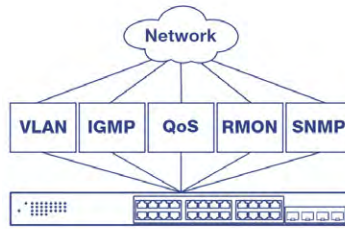
TRENDnet's Gigabit Web Smart Switch series offers advanced L2+ features with enhanced traffic management controls to meet the evolving demands of SMB networks. This rack mountable IPv6-ready managed switch comes with an intuitive web-based interface. Advanced managed switch features include LACP to group ports together to increase bandwidth between switches, VLANs for segmenting and isolating virtual LAN groups, QoS for traffic prioritization, port bandwidth controls, and SNMP monitoring, making this a powerful solution for SMB networks. Improve voice performance by isolating and prioritizing VoIP traffic from normal data traffic with the easy-to-use voice VLAN feature.

Free up router resources by offloading routing processes to the managed switch by using the L2+ IPv4/IPv6 static routing feature to efficiently route traffic at the switch level. The dynamic ARP inspection feature helps protect connected devices from man-in-the-middle attacks by discarding malicious and invalid ARP packets. Take advantage of the available multicast and IGMP/MLD snooping features to optimize IP surveillance system performance, and minimize network traffic. This TRENDnet Web Smart Managed Switch also feature 10G SFP+ slots to support long-distance fiber networking applications.



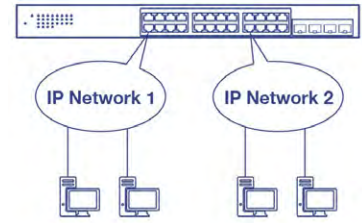
### 10G SFP+ Slots

Offers four dedicated 10G SFP+ slots for high-speed network connections, providing a cost-effective solution in adding 10G link capability to an SMB network.



### Integration Flexibility

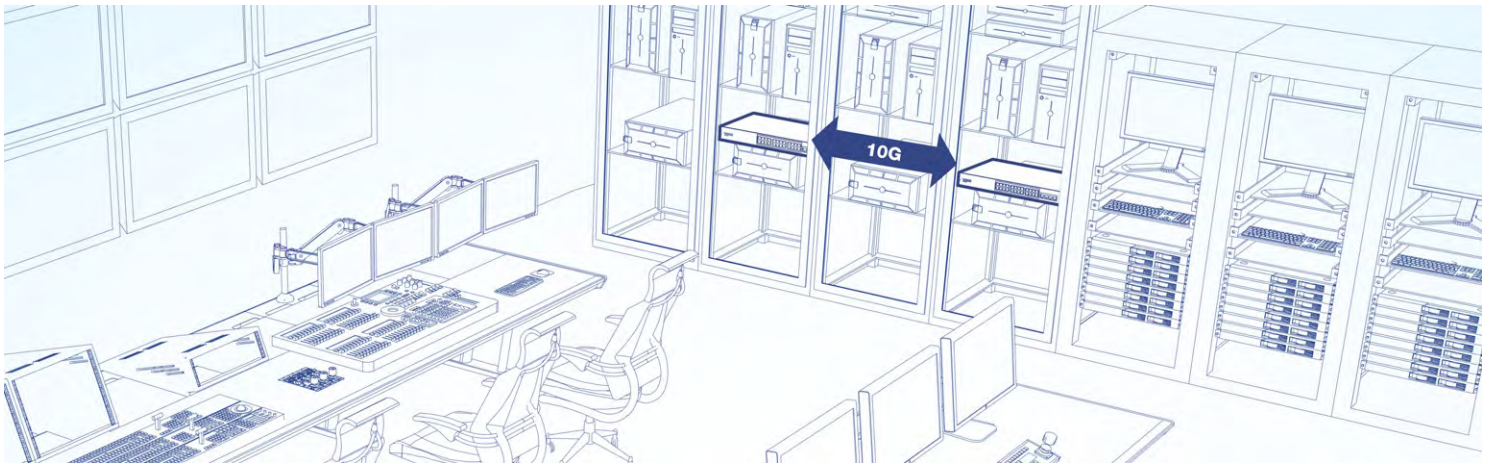
Managed switch features include access control lists, VLAN, IGMP/MLD snooping, QoS, RMON, SNMP trap, and syslog for monitoring and flexible network integration.



### IPv4/IPv6 Static Routing

Free up router resources by offloading routing processes to the managed switch by using the L2+ IPv4/IPv6 static routing feature to efficiently route traffic at the switch level.

## NETWORKING SOLUTION



## FEATURES



### Hardware Design

Provides gigabit ports for device connections, 10G SFP+ slots for fiber applications, and a 1U 19" rackmount design with brackets included



### 10G SFP+ Slots

Offers four dedicated 10G SFP+ slots for high-speed network connections, providing a cost-effective solution in adding 10G link capability to an SMB network



### IPv6 Ready

This managed switch supports IPv6 configuration and IPv6 neighbor discovery



### Traffic Management

Managed switch features include: Link aggregation, 802.1Q VLAN, Voice VLAN, Multicast VLAN, RSTP, MSTP, Loopback Detection, QoS, and port bandwidth management



### IPv4/IPv6 Static Routing

Offload routing processes to the managed switch by using the L2+ IPv4/IPv6 static routing feature to efficiently route traffic at the switch level



### Dynamic ARP Inspection

Dynamic ARP inspection feature helps protect connected devices from man-in-the-middle attacks by discarding malicious and invalid ARP packets



### Troubleshooting

A convenient cable diagnostic test and traffic statistics aid in network troubleshooting



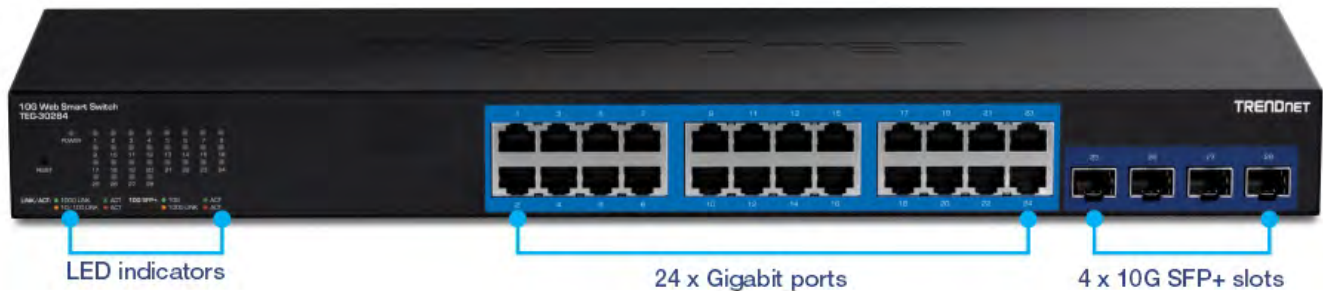
### Access Control

Includes ACL, SSL, MAC/port filtering, 802.1X, TACACS+, and RADIUS



### Monitoring

RMON, SNMP, SNMP Trap, and Port Mirroring support administrator monitoring solutions



## SPECIFICATIONS

### Standards

- IEEE 802.1d
- IEEE 802.1p
- IEEE 802.1Q
- IEEE 802.1s
- IEEE 802.1w
- IEEE 802.1X
- IEEE 802.1ab
- IEEE 802.3
- IEEE 802.3u
- IEEE 802.3x
- IEEE 802.3z
- IEEE 802.3ae
- IEEE 802.3ab
- IEEE 802.3ad
- IEEE 802.3az

### Device Interface

- 24 x Gigabit ports
- 4 x 10G SFP+ slots
- LED indicators

### Data Transfer Rate

- Ethernet: 10Mbps (half duplex), 20Mbps (full duplex)
- Fast Ethernet: 100Mbps (half duplex), 200Mbps (full duplex)
- Gigabit Ethernet: 2000Mbps (full duplex)
- 10G SFP+: 20Gbps (full duplex)

### Performance

- Switch fabric: 128Gbps
- RAM buffer: 1.5MB
- MAC Address Table: 16K entries
- Jumbo Frames: 12KB
- HOL Blocking Prevention
- Forwarding rate: 95.2Mpps (64-byte packet size)

### Management

- CLI (Telnet / SSHv2) for basic administration
- HTTP/HTTPS (SSL v2/3 TLS) Web based GUI
- SNMP v1, v2c, v3
- RMON v1
- Static Unicast MAC Address
- Enable/disable 802.3az Power Saving
- LLDP and LLDP-MED
- Virtual Cable Diagnostics Test
- IPv6: IPv6 Neighbor Discovery, IPv6 Static IP, DHCPv6, Auto configuration
- Dual image and configuration
- TC Root/Protect

### MIB

- IP Forward Table MIB RFC 1354
- RMON MIB RFC 1271
- IPv4 MIB RFC 1213
- IPv6 MIB RFC 2465
- GVRP MIB IEEE 802.1Q-VLAN
- LA MIB IEEE 802.3ad
- LLDP MIB IEEE 802.1ab
- IGMP Snooping MIB RFC 2933
- MLD Snooping MIB RFC 3019
- Private VLAN MIB IEEE 802.1Q
- DHCP SNOOP MIB RFC 2026
- QoS MIB RFC 4323
- SNMP MIB RFC 3415
- STP MIB RFC 4318
- PNAC MIB IEEE 802.1x
- VLAN MIB IEEE 802.1q
- DNS MIB RFC 1611
- ACL MIB
- Bandwidth CTRL MIB
- LBD MIB
- Mirror MIB
- IPv6 NEIGHBOR MIB
- SNTP MIB
- Storm CTRL MIB
- Statistics MIB
- Tool MIB
- Voice VLAN MIB
- DoS MIB

### Spanning Tree

- IEEE 802.1D STP (Spanning Tree protocol)
- IEEE 802.1w RSTP (Rapid Spanning Tree protocol)
- IEEE 802.1s MSTP (Multiple Spanning Tree protocol)

### Link Aggregation

- Static Link Aggregation
- 802.3ad Dynamic LACP

### Quality of Service (QoS)

- 802.1p Class of Service (CoS)
- DSCP (Differentiated Services Code Point)
- Bandwidth Control per port
- Queue Scheduling: Strict Priority, Weighted Round Robin (WRR)

### VLAN

- Multiple management VLAN assignment
- Asymmetric VLAN
- 802.1Q Tagged VLAN
- Dynamic GVRP
- MAC-based VLAN
- Protocol-based VLAN
- Up to 256 VLAN groups, ID Range 1-4094
- Private VLAN (Protected Ports)
- Voice VLAN (10 user defined OUIs)

### Multicast

- IGMP Snooping v1, v2, v3 (per VLAN)
- MLD Snooping v1, v2
- IGMP fast leave
- MVR (Multicast VLAN Registration)
- Static Multicast Address
- Up to 256 multicast entries

### Port Mirror

- RX, TX, or Both
- Many to one

### Access Control

- 802.1X Port-Based Network Access Control, RADIUS, TACACS+
- Local Dial-in User Authentication
- DHCP Snooping (per VLAN)
- Loopback Detection
- Duplicated Address Detection
- Trusted Host
- Denial of Service (DoS)
- IP MAC port binding
- Dynamic ARP inspection
- Block unknown multicast

### ACL IPv4 L2-L4 & IPv6

- MAC Address
- VLAN ID
- Ether Type (IPv4 only)
- IP Protocol 0-255
- TCP/UDP Port 1-65535
- 802.1p
- DSCP (IPv4 only)
- IPv6 Address (IPv6 only)

### Layer 3 Features

- IPv4 / IPv6 static routing
- IP interfaces: Up to 6
- Routing table entries: Up to 32 (IPv4 / IPv6)
- ARP table (up to 128 entries)
- Inter-VLAN routing

**Compatibility**

- Optional Software Utility: Windows® 10, 8.1, 8, 7, Vista, XP, Windows® 2003/2008 2016 Server Compatibility

**Special Features**

- 10G SFP+ slots
- Fanless Design
- IPv6
- 802.3az power saving
- Rack mountable

**Power**

- Input: 100 - 240V AC, 50/60Hz, internal power supply
- Max. consumption: 22.8W

**MTBF**

- 948,066 hours

**Operating Temperature**

- -5° – 50° C (23° – 122° F)

**Operating Humidity**

- Max. 95% non-condensing

**Dimensions**

- 440 x 140 x 44mm (17.32 x 5.51 x 1.74 in.)
- Rack mountable 1U height

**Weight**

- 2.09kg (4.61 lbs.)

**Certifications**

- CE
- FCC

**Warranty**

- Lifetime

**Package Contents**

- TEG-30284
- Quick Installation Guide
- Power cord (1.8m / 6 ft.)
- Rack mount kit

TRENDnet offers a lifetime warranty for all of its metal-enclosed network switches that have been purchased in the United States/Canada on or after 1/1/2015. Cooling fan and internal power supply carry a one-year warranty.

All references to speed are for comparison purposes only. Product specifications, size, and shape are subject to change without notice, and actual product appearance may differ from that depicted herein.