

BLACK PEG RACKING INSTRUCTIONS

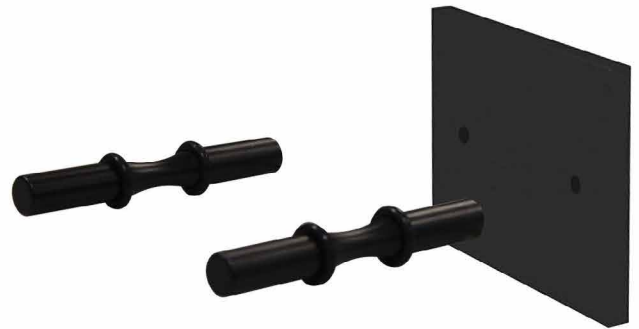
Step 1:

Below is everything included with our Black Peg Racking (1 Bottle Deep).



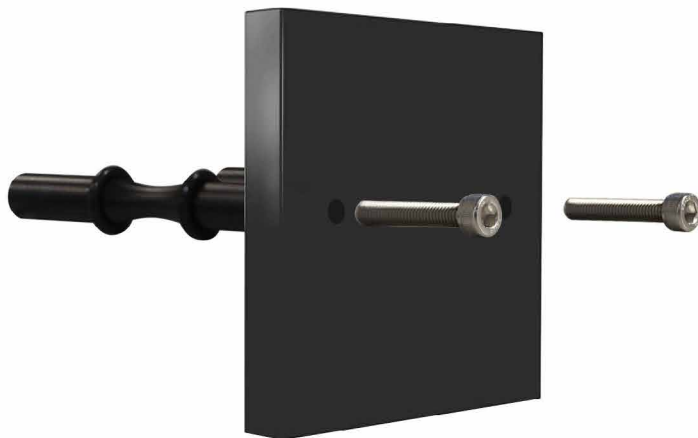
Step 2:

Locate the backing board or wall space where you would like to install your black pegs. Drill the appropriate number of holes then insert your pegs into those holes.



Step 3:

On the otherside of the backing board/wall, insert the included hex socket head cap screws.



Step 4:

Using a screwdriver or similar tool, firmly turn the hex socket head cap screws until the pegs no longer move.

