

# Double Section Swing Out 18U Wall Mount Cabinets

## Product Detail



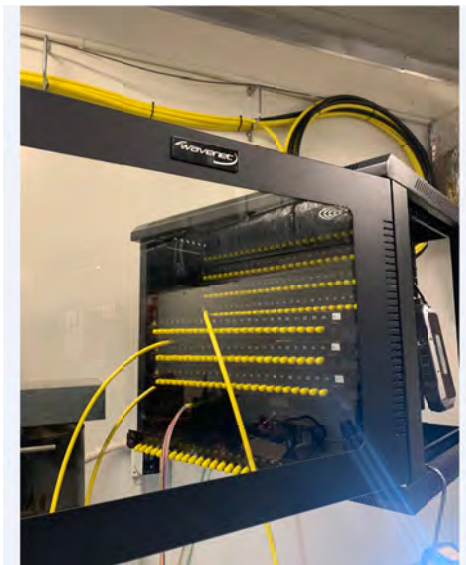
## Overview

Wavenet CBTF Series Double Section Swing Out 18U Wall Mount Cabinets are suitable for intermediate distribution frame (IDF) locations such as server room audio/video/security applications, wiring closets, manufacturing areas, warehouses, or anywhere where remote networking equipment needs to be protected and store.

## Features

- Cable entry and exit on top and bottom knockouts
- Lockable front, rear doors and side panels
- Reversible right or left handed front door
- Integrated with ground point for maximum protection
- Number markings on rails with adjustable depth
- Made with tempered glass shatter resistance front door
- (1) 68CFM fan with one extra slot for additional fan
- 24" depth, useable is 18", (3 sets) of 16" on center mount
- Ships fully assembled to save time
- 90 lbs. load capacity when properly secured

## Application



## Standards & Compliance

- ANSI/EIA 310-D,
- IEC60297-2, DIN41194 Part 1, DIN41494; Part 7
- RoHS

## Package Includes

- Double Section Swing Out 18U Wall Mount Cabinet, 1 PC.
- Mounting Hardware, 1 –Pack w/2 keys

Part Number	U Size	Dimensions
CBTF-WM18U-SW	18U	23.6" W X 35.6"H X 23.6" D